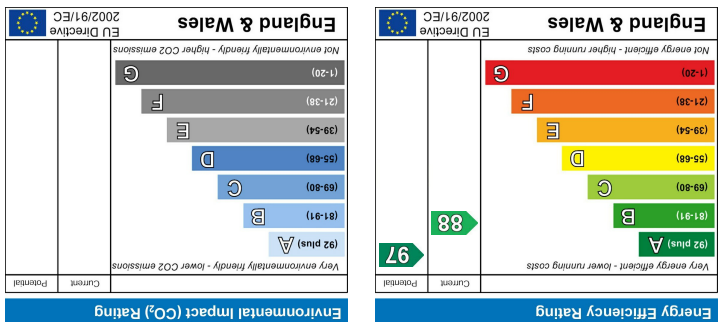


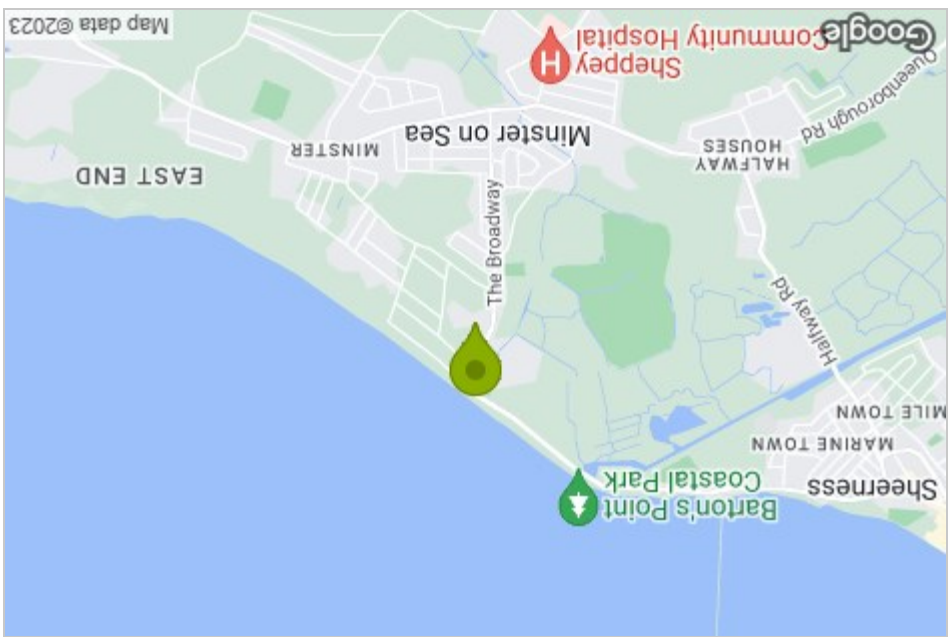
These particulars, whilst believed to be accurate are set out as a general outline only for guidance and do not constitute any part of an offer or contract. Intending purchasers should not rely on them as statements of representation of fact, but must satisfy themselves by inspection or otherwise as to their accuracy. No person in this firm's employment has the authority to make or give any representation or warranty in respect of the property.

Please contact our Isle of Sheppey Office on 01795 666 666 if you wish to arrange a viewing appointment for this property or require further information.

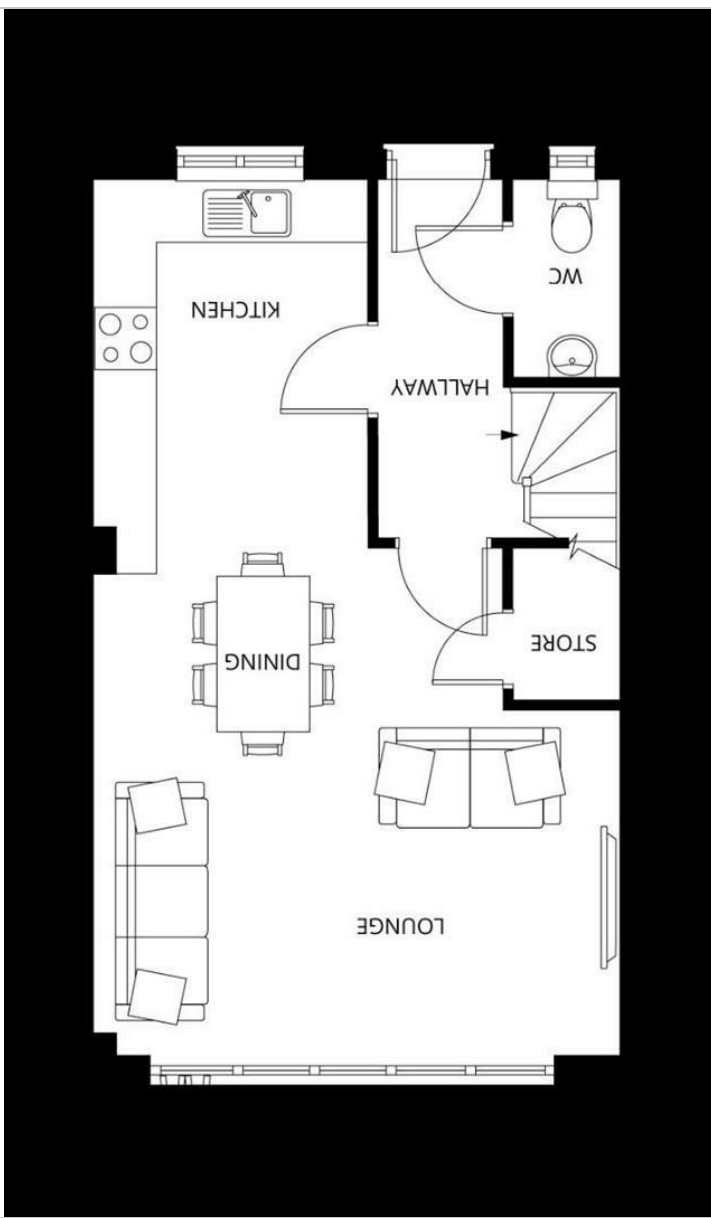
Viewing



Energy Efficiency Graph



Area Map



Floor Plan



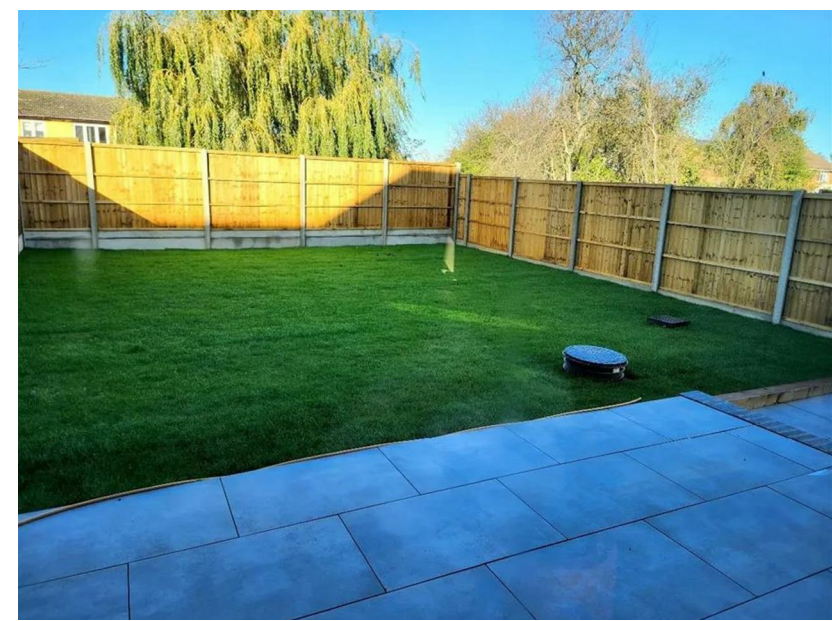
Promenade view 2 Augustine Road

Minster On Sea, Sheerness, ME12 2NE

Asking price £395,000



Promenade view 2 Augustine Road



- Freehold
- Energy efficient air sourced heat pump
- External electrical sockets
- Ensuite Shower
- Fitted Kitchen
- 3 Bedrooms
- Integrated Appliances
- No Onward Chain
- Private driveway
- Viewings Recommended

Description

Promenade View is a perfect home for a couple or growing family, Promenade View is beautifully designed, combining traditional construction with bold, modern sensibilities. This house is built using the latest renewable energy solutions including air-sourced heat pumps, solar panels and wall-mounted electric car chargers.

The ground floor includes a spacious lounge, kitchen and dining area with bifold doors opening on the patio and garden - making it the perfect space to relax on sunny evenings, and ideal for summer al fresco entertaining. On the first floor, you'll find two bedrooms, a bathroom, and convenient built-in storage while the top floor houses a light and airy master bedroom with its own en-suite bathroom.

At the front of the house, this property has its own private driveway leading to a garage with an electric garage door.

Enquire Today!

Minster On Sea, Sheerness, ME12 2NE

